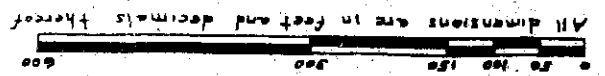


# DAUNER SUBDIVISION

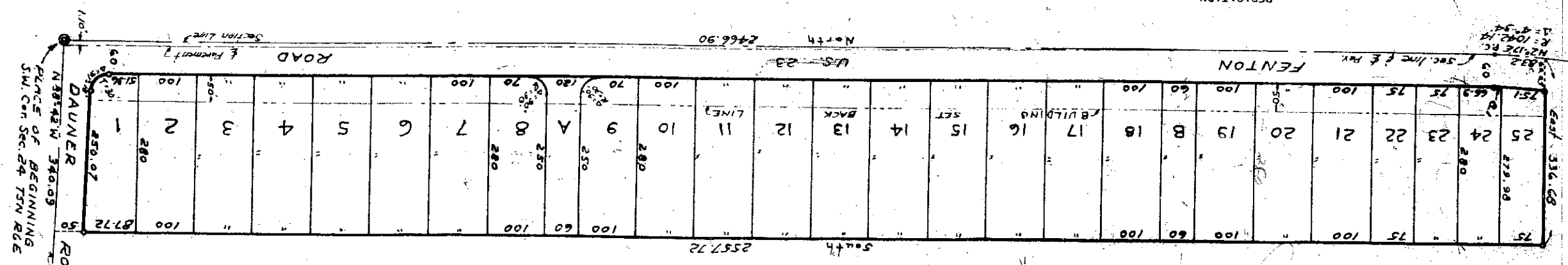
PART OF THE 3/4 SECTION 24, T5N R6E, FENTON TOWNSHIP  
GENESESE COUNTY, MICHIGAN

EXAMINED AND APPROVED  
Date DEC 17 1957

Frank S. Soyarski  
AUDITOR GENERAL



All dimensions are in feet and decimals thereof



### DEDICATION

KNOW ALL MEN BY THESE PRESENTS: THAT WE, COLETTE D. MARTIN, AND MARY F. BUTTS, AND BOB D. BUTTS, A SINGLE MAN, AND IVAN L. TUTTLE, HIS WIFE, AND O. U. HARDING, AND MARY HARDING, HAVE CAUSED IN THE ANNEXED PLAT TO BE SURVEYED, LAID OUT, AND PLATTED, TO BE KNOWN AS "DAUNER SUBDIVISION", PART OF THE SW 1/4 SECTION 24, T5N R6E, FENTON TOWNSHIP, GENESESE COUNTY, MICHIGAN, AND THAT THE ROADS AS SHOWN ON SAID PLAT ARE HEREBY DEDICATED TO THE USE OF THE PUBLIC.

COLETTE D. MARTIN

MARY F. BUTTS

BOB D. BUTTS

IVAN L. TUTTLE

FRANCES E. TUTTLE

O. U. HARDING

MARY HARDING

Alice Bell McGarry

C. W. McGarry

C. W. McGarry

STATE OF MICHIGAN) ss  
COUNTY OF GENESESE)

ON THIS DAY OF June 1957, BEFORE ME, A NOTARY PUBLIC IN AND FOR SAID COUNTY, PERSONALLY APPEARED THE ABOVE NAMED COLETTE D. MARTIN, AND MARY F. BUTTS, AND BOB D. BUTTS, A SINGLE MAN, AND IVAN L. TUTTLE, HIS WIFE, AND O. U. HARDING, AND MARY HARDING, HIS WIFE, KNOWN TO ME TO BE THE PERSONS WHO EXECUTED THE ABOVE DEDICATION, AND WHO ACKNOWLEDGED THE SAME TO BE THEIR FREE ACT AND DEED.

My Commission Expires October 3, 1958

C. W. McGarry, Notary Public  
Genesee County

### DESCRIPTION OF LAND PLATTED

THE LAND EMBRACED IN THE ANNEXED PLAT OF "DAUNER SUBDIVISION", PART OF THE SW 1/4 SECTION 24, T5N R6E, FENTON TOWNSHIP, GENESESE COUNTY, MICHIGAN, IS DESCRIBED AS FOLLOWS: BEGINNING AT THE SW CORNER OF SAID SECTION 24, THENCE NORTH 2466.90 FEET TO A POINT OF CURVE; THENCE TO THE RIGHT ON A CURVE (RADIUS = 1042.14 FEET, CENTRAL ANGLE = 49 34'), LONG CHORD BEARING AND DISTANCE N 29 17' E 83.20 FEET, THENCE EAST 336.68 FEET, THENCE SOUTH 2557.72 FEET TO THE SOUTH LINE OF SAID SECTION 24, THENCE N 88 42' W 340.09 FEET TO THE PLACE OF BEGINNING. THIS PLAT CONTAINS TWENTY-FIVE LOTS, AND TWO OUTLOTS, "A" AND "B".

### CERTIFICATE OF MUNICIPAL APPROVAL

THIS PLAT WAS APPROVED BY THE TOWNSHIP BOARD OF THE TOWNSHIP OF FENTON, AT A MEETING HELD ON THE DAY OF June 1957

### CERTIFICATE AS TO STATE TRUNK OR FEDERAL AID ROADS

WE HEREBY CERTIFY THAT SAID PLAT APPEARS TO INCLUDE LAND LOCATED ON A STATE TRUNK LINE OR FEDERAL AID ROAD.

EARL M. SMITH, REGISTER OF DEEDS

GEORGE G. DUNN, COUNTY CLERK

JAMES P. BARKEY, COUNTY TREASURER

B. E. O'BRIEN, DRAIN COMMISSIONER

### COUNTY TREASURER'S CERTIFICATE RELATIVE TO TAXES

OFFICE OF THE COUNTY TREASURER, GENESESE COUNTY, MICHIGAN

I HEREBY CERTIFY THAT THERE ARE NO TAX LIENS OR TITLES HELD BY THE STATE ON THE LANDS DESCRIBED HEREON, AND THAT THERE ARE NO TAX LIENS OR TITLES HELD BY INDIVIDUALS ON SAID LANDS FOR THE FIVE YEARS PRECEDING THE DAY OF June 1957, AND THAT TAXES FOR SAID PERIOD OF FIVE YEARS ARE PAID AS SHOWN BY THE RECORDS OF THIS OFFICE. THIS CERTIFICATE DOES NOT APPLY TO TAXES, IF ANY, NOW IN PROCESS OF COLLECTION BY TOWNSHIP, CITY OR VILLAGE COLLECTION OFFICERS.

JAMES P. BARKEY, COUNTY TREASURER

### SURVEYOR'S CERTIFICATE

I HEREBY CERTIFY THAT THE PLAT HEREON DELINEATED IS A CORRECT ONE, AND THAT PERMANENT METAL MONUMENTS CONSISTING OF BARS NOT LESS THAN ONE-HALF INCH IN DIAMETER AND 36 INCHES IN LENGTH ENCASED IN A CONCRETE CYLINDER AT LEAST FOUR INCHES IN DIAMETER AND 36 INCHES IN DEPTH HAVE BEEN PLACED AT ALL POINTS MARKED THUS "O" AS THEREON SHOWN AT ALL ANGLES IN THE PLAT BOUNDARIES AT THE INTERSECTIONS OF STREETS AND AT THE INTERSECTION OF STREETS WITH THE BOUNDARIES OF THE PLAT AS SHOWN ON SAID PLAT.

JOHN C. MACKIE, R.L.S. 17434

### CERTIFICATE OF APPROVAL BY BOARD OF COUNTY ROAD COMMISSIONERS

THIS PLAT HAS BEEN EXAMINED AND WAS APPROVED ON THE DAY OF June 1957 BY THE GENESESE COUNTY BOARD OF ROAD COMMISSIONERS.

JOHN D. BARKEY